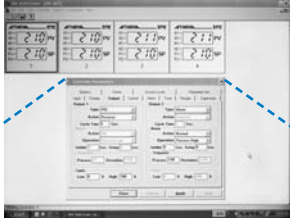


Multi-Comm™ Remote Monitoring and Control Software

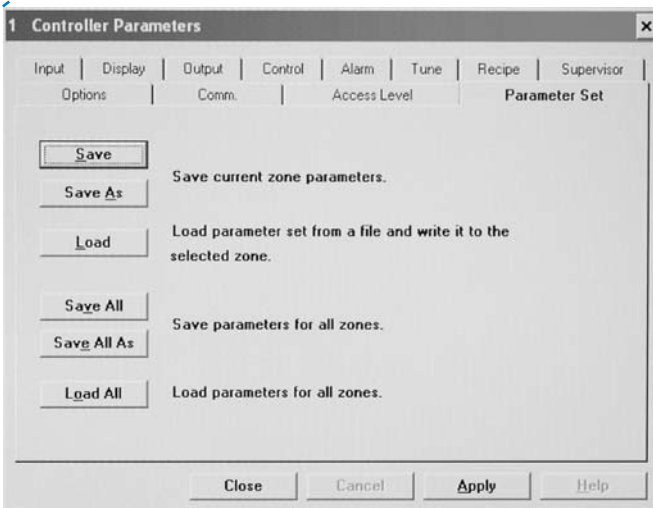
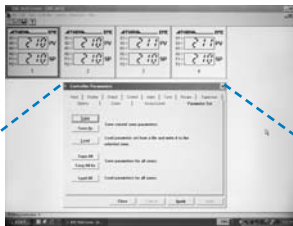
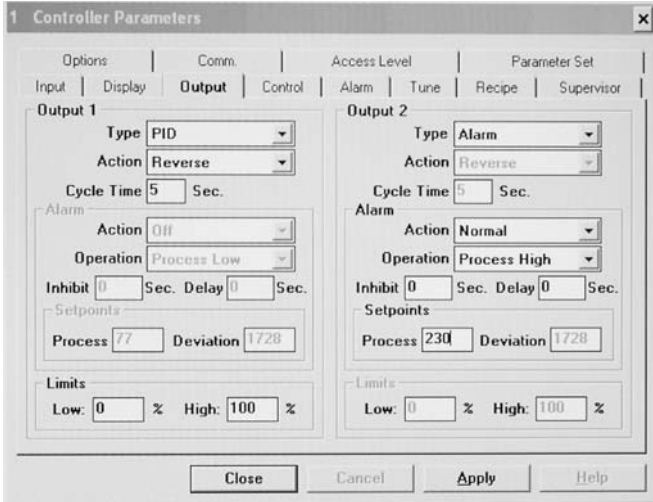
Distributed By: **B.J. Wolfe Enterprises, Inc**

Tel: (800) 554-1224, Fax: (818) 889-8417, email: info@bjwe.com



Athena Multi-Comm Software is designed for use with all Infinity with Modbus®, C-Series with either Modbus or Athena+ and Legacy Series Controllers using Athena+, and can control up to 100 temperature or process controllers/zones via an RS-485 network.* Up to sixteen controllers/zones can be simultaneously viewed on screen at one time with a color emulation of each controller's front panel display showing process value and setpoint in real time.

- ▲ Pull-Down Menus and Pop-Up Windows Make Controller Configuration and Data Analysis Easy
- ▲ Multiple Operator Security Levels and Password Protection Prevent Unauthorized Access or Accidental Changes to Process Parameters
- ▲ Automatic Controller Detection Locates and Identifies Each Controller or Control Zone on the Network
- ▲ User-Defined 10-Character Controller Labels Allow Custom Identification of Any Controller or Control Zone
- ▲ Storage and Retrieval of all Configuration Parameters for all Networked Controllers or Control Zones to a Single Data File
- ▲ Provides Each Controller or Control Zone with Two Additional Local Alarms (Process Hi/Lo) Without Affecting Other Alarms
- ▲ Captures and Time-Stamps Process Value and Setpoint Data to Log File for Subsequent Storage and Analysis
- ▲ Displays Graph Window Showing Real-Time Plot of Process Value vs. Setpoint for Any Controller or Control Zone on Network



*min requirements: 386SX, 1 Mb of free hard-disk space, Windows® 3.1 or later
 *(client to update minimum hardware and software operating requirements)

Technical Specifications

Security Features

To prevent unauthorized changes to either controller of Multi-Comm parameters, operators must follow specific login and logout procedures. Each operator may have an individual user ID and password, which must be entered exactly the same each time access is requested. Operators may be assigned different security levels, depending on their specific access requirements. You may specify any or all of the following access privileges per operator:

- ▲ Change Setpoint (access to change controllers' or control zones setpoints)
- ▲ View/Change Parameters (access to controllers' or control zones parameters)
- ▲ Controller Configuration (access to Multi-Comm configuration options)
- ▲ Super User (access to add or change operator passwords and privileges)

Communications Setup

Multi-Comm is designed for bidirectional communications to Athena EMC, C-Series, and Legacy Series controllers connected via an RS-485 hookup using an available RS-232 serial port on your computer. It allows you to easily set up your communications port, polling frequency, and timeout frequency.

Controller Setup

Multi-Comm uses the network ID numbers you've assigned to your controllers in order to communicate to them. Using its Automatic controller detection (ACD) feature, Multi-Comm can find and identify each controller or control zone on the network automatically and label each controller or control zone with the network ID you've assigned it. You may also change its name to any 10-character designation.

Adding and Deleting Controllers or Control Zones

Multi-Comm allows you to remove individual controllers or control zones from software control and add them back at any time.

Local Alarms

Multi-Comm provides two additional "local" alarms for each controller or control zones on the network: one high process alarm and one low process alarm. They do not affect the operation of the controller's or control zones' regular alarms.

Data Logging

Multi-Comm will capture the process and setpoint values of each controller or control zones on the network and save it to an ASCII file that can be read by any text editor or word processor. It will also give you the option of appending or overwriting data to an existing log file, when you specify the same log file name at a later date. The log data, which is time-stamped and identified with each controllers' or control zones' name, may also be imported directly into a Microsoft® Excel spreadsheet for further analysis and graphic. Log time can be varied by the operator.

Graph Window

Multi-Comm allows an operator to visually track a selected controller's or control zones' instantaneous setpoint and process values over a period of several minutes with an on-line graphing feature.

Specifications subject to change without notice.